



Nac Image Technology Inc.
Application Engineer Sales and Marketing
22.8.2023 G19574



MLink Ver.1.81a

Release note

On August 22, 2023

MLink component version

- MLink ver.1.81a
- MVIEW ver.3.47a
- HXLink ver.1.9.96f

Contents

- | | |
|----------------------------|--|
| • MLink | MLink installer 64bit / 32bit for windows 10 Pro and 11 Pro
High-speed camera control software
Supported camera: GX, HX, Q, MX, ACS |
| • HXLink | HXLink installer 64bit / 32bit for windows 10 Pro and 11 Pro
High-speed camera control software (Legacy Edition)
Supported camera: fx, GX, HX, Q1m, Q1v and Q5 |
| • MVIEW | MVIEW installer 64bit / 32bit for windows 10 Pro and 11 Pro
Viewer software |
| • HASP driver | Driver for license management dongle key |
| • USB3.0 driver | Driver for USB3.0 Download for ACS camera. |
| • GenICam driver | Driver for Q camera |
| • GigEVision Filter driver | Driver for Q camera |

MLink Ver.1.81a Update Information

This section contains updates from MLink Ver.1.80a

Add new cameras.

GO-4K is now supported.

Add new functionality.

1. Added automatic ARM function after downloading.	5
2. Consolidated the location of settings for warning display functions related to image protection.	6
3. Stabilization of multi-camera simultaneous live display.....	7
4. Support manual loading of camera setting files.....	8
5. Added histogram display.....	9
6. AE (Auto Exposure) function detection area setting support.....	10
7. Added Ruler function (1/2).....	11
7. Added Ruler function (2/2).....	12
8. Improved.....	13
9. Bug fix.	13

1. Added automatic ARM function after downloading.

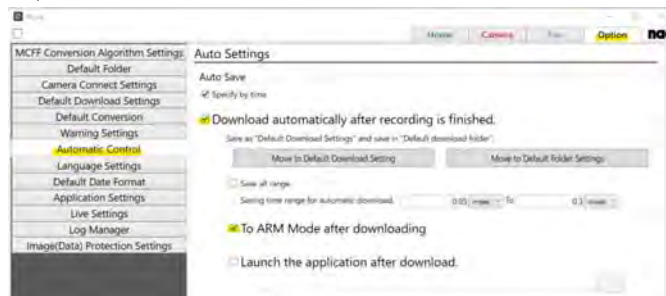
A function to automatically set the camera mode to ARM automatically after the download is complete is added as a function to automate the experiment.

This function can be used, for example, to automatically repeat multiple image-triggered shooting and storage of video data.

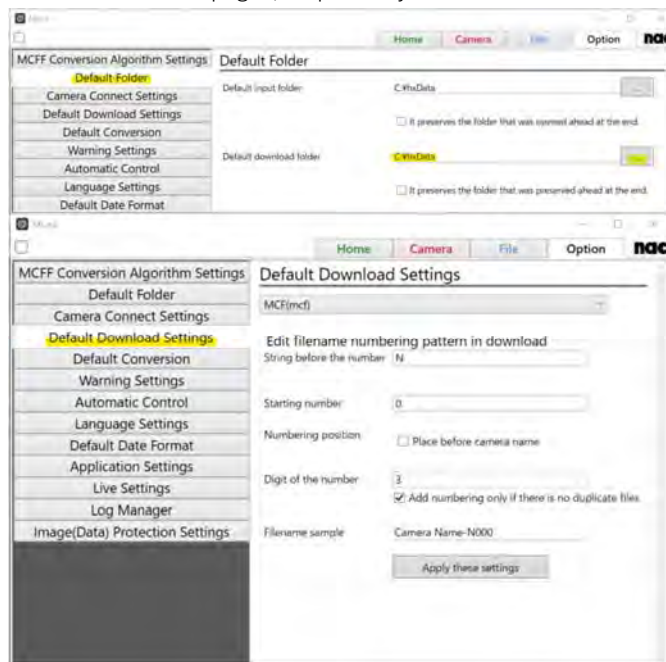


How to set up:

(1) Please enable the automatic download and automatic ARM functions on the "Automatic Control" page of the "Options" tab.



(2) The destination and file name for automatic downloads can be set on the "Default Folder" and "Default Download Format" pages, respectively.

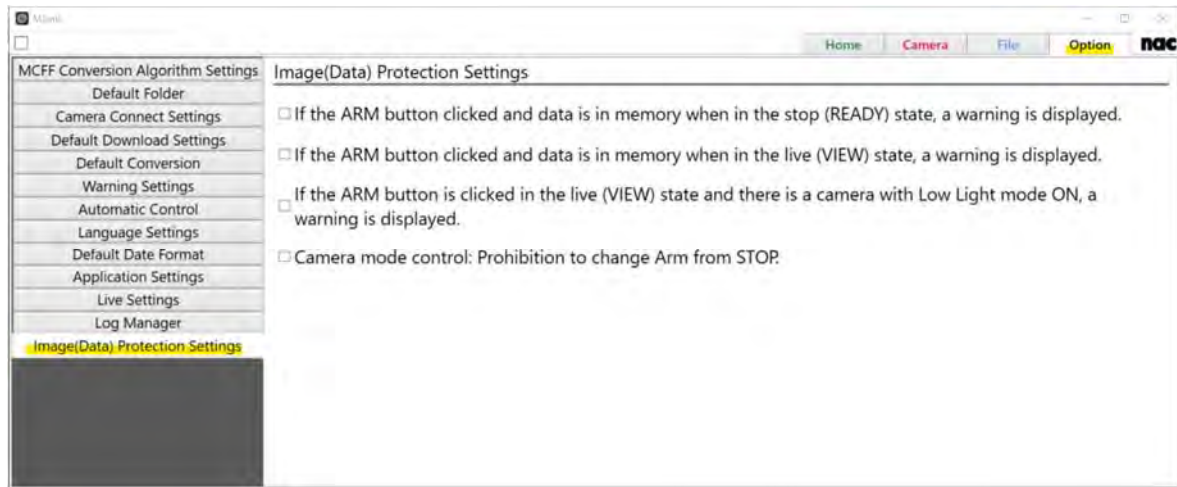


Limitation: Not supported by Q series cameras.

2. Consolidated the location of settings for warning display functions related to image protection.

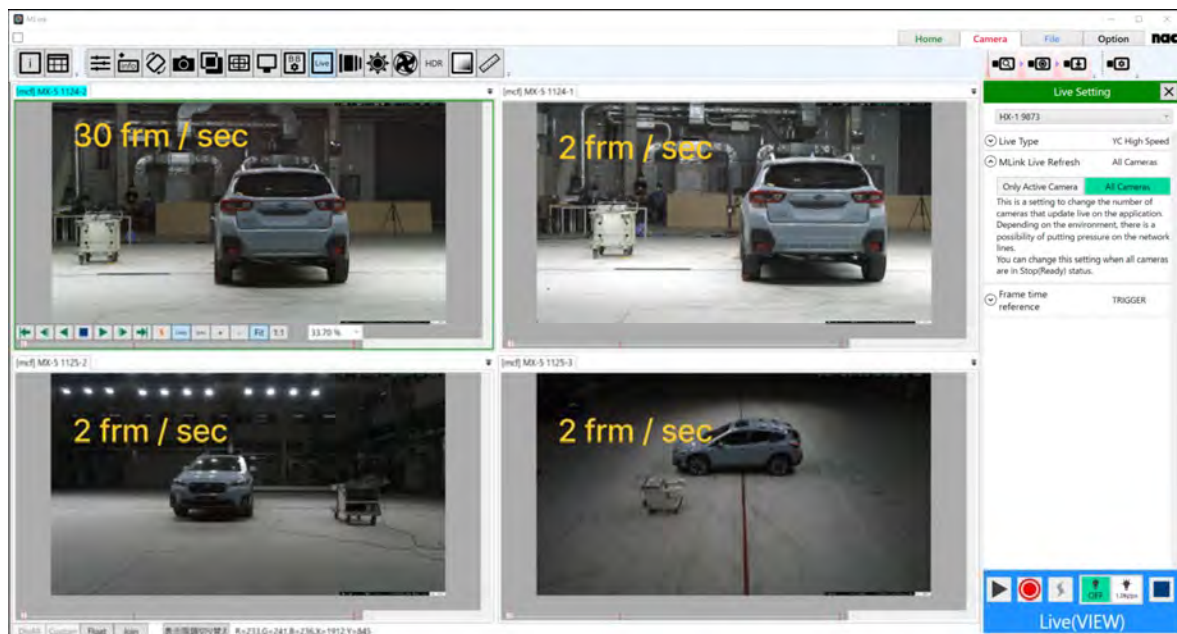
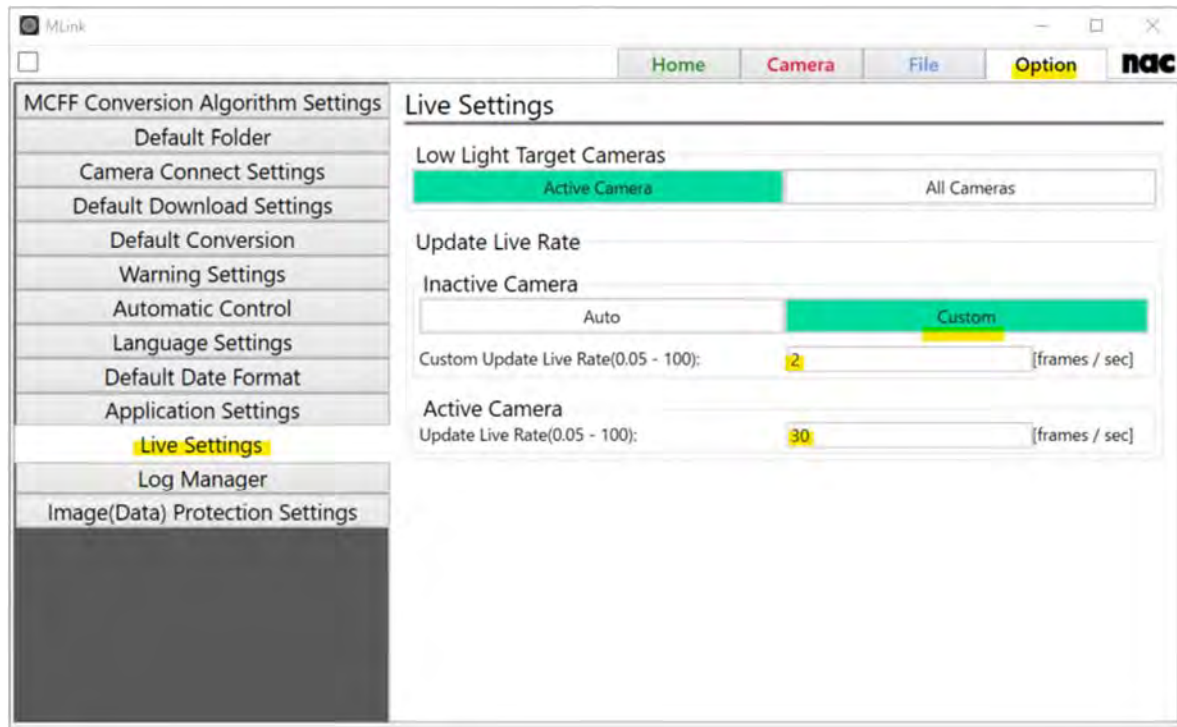
The "Warning Display" function is reorganized and the setting items for functions related to image protection is integrated into the "Image (Data) Protection" section.

In addition, when an ARM operation is performed with low light ON, a function to issue a warning is added. And a function to prohibit the transition from READY state to ARM is added.



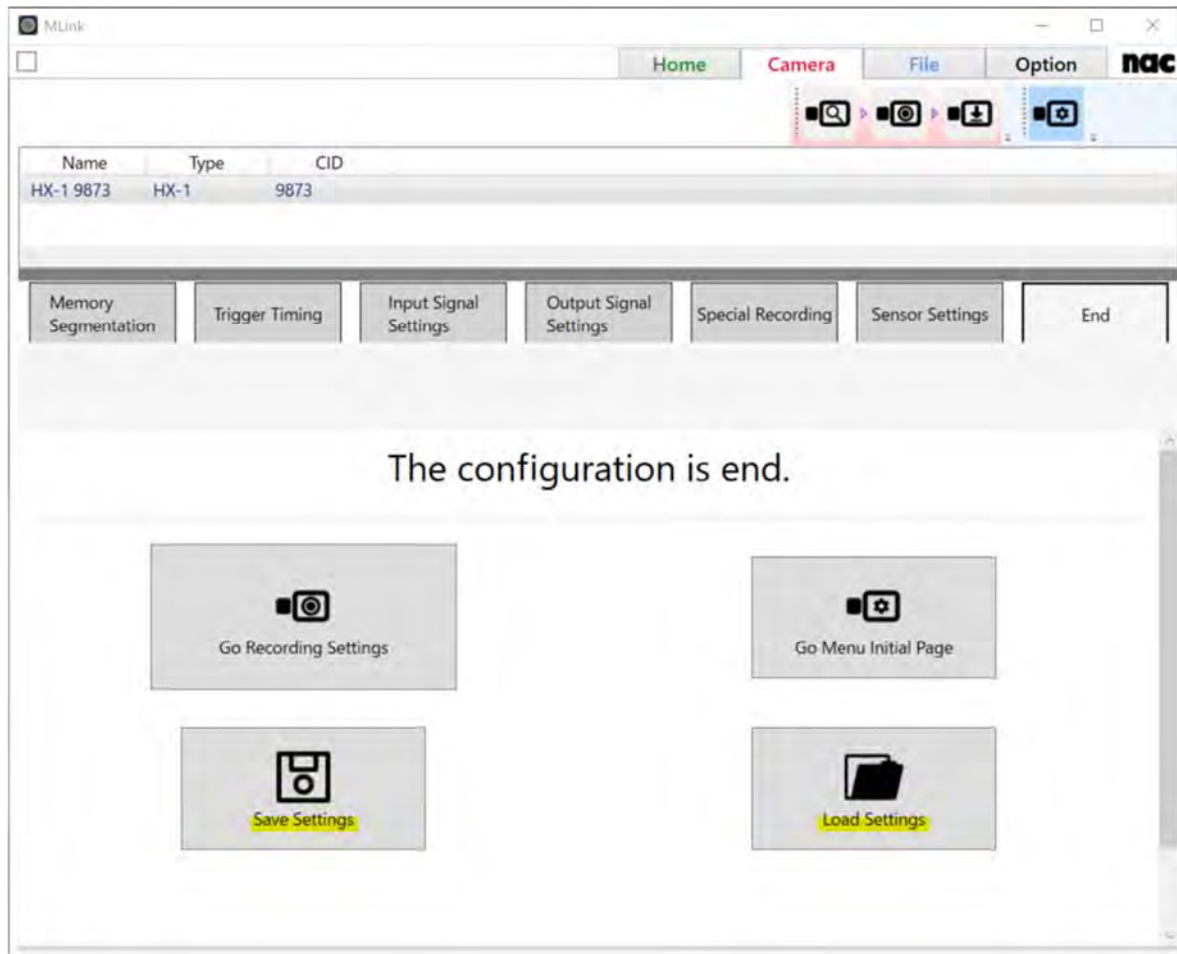
3. Stabilization of multi-camera simultaneous live display

The ability to simultaneously display live images from multiple cameras has been available for some time, but the high CPU load sometimes resulted in unstable operation depending on the operating environment. Update Live Rate can be selected with Inactive camera and Active camera separately from MLink Ver1.81a. With this support, stable operation is now possible even when live images are displayed simultaneously when multiple cameras are used.



4. Support manual loading of camera setting files.

At the end of the recording menu, there is a function to save setting items to a file, which could previously be applied at the time of connection. Now we added the ability to load the camera settings file manually after connection. With this support, it is now possible to load the camera settings from a file without reconnecting.



Non-supported items:

Segment settings are not supported.

When trigger mode "MULTIS(A)", "MULTIS(L)" which is the function to record while switching segments automatically is used in loading camera settings, it is necessary to set the number of segment divisions in advance.

5. Added histogram display.

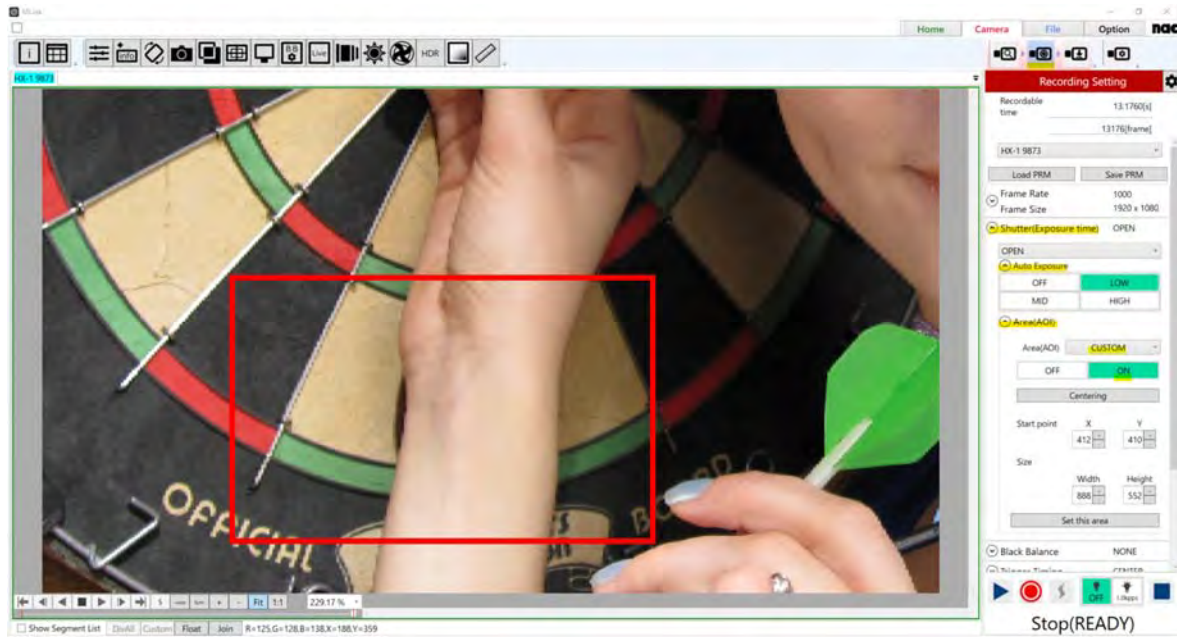
A histogram display is added to the "Exposure Settings" panel, which can be displayed from the Quick Toolbar.



6. AE (Auto Exposure) function detection area setting support.

AE (Auto Exposure) detection area can now be set now.

When "CUSTOM" is selected in "Range (AOI)" under "Shutter (Exposure Time)" in the recording settings, the ON/OFF selection for rectangle selection will appear. When ON is selected, the AE detection area can be selected by dragging and dropping on the screen.



7. Added Ruler function (1/2).

A ruler display function is added to the "Simple Measurement" panel displayed from the Quick Toolbar.

The type of ruler display can be selected from the following three types.

- Manual : Display rulers from the actual length against a certain reference length.
- Pixel : Display rulers from the pixel unit.
- Use Photo Info. : Display rulers from recording information (Sensor of camera) and lens optical magnification.

Example of "Manual" usage:

- 1) Select "Manual" in "Ruler type".
- 2) Select the starting point ("Point 1") and the ending point ("Point 2") which is the line segment to be used as the reference for the actual length by clicking in the image.
- 3) Enter actual distance between the two points in "Distance".
- 4) Enter "Ruler Width" to display the rulers on the image.



Example of "Pixel" usage:

- 1) Select "Pixel" in "Ruler type"
- 2) Enter "Ruler Width" and the ruler will appear on the image.



7. Added Ruler function (2/2).

Example of using "Use Photo info.":

- 1) Select "Use Photo info." in "Ruler type".
- 2) Select the camera used at the time of recording in "Camera Type" (in the case of MCFF, this information is automatically entered from the property information).
- 3) Enter "Lens Magnification".
- 4) Enter "Ruler Width" to display that ruler on the image



8. Improved.

1. Improved drawing update rate for AVI and MCFF files.

9. Bug fix.

1. [Camera] improvement of MX-5 live communication processing
2. [Camera] improvement of MX-5 live communication processing
Live data was being sent not only during VIEW/ARM/REC/PLAY/LOOP but also during READY. However, we have improved the system so that it does not send out unnecessary live data while READY is in progress.
3. [Camera] Modified the TRIG OUT function of the HX and ACS cameras so that the trigger input from the software is only sent to the camera with TRIG OUT enabled.
4. [Camera] Fixed a bug that it took a long time from the start of connection to the display of live image when connecting to GX-5.
5. [Camera] Fixed a bug that the "Frame Size Detail" panel could not be set when the HX camera was rotated 90 degree or 270 degrees.
6. [Camera] Fixed a bug that the luminance characteristic TABLE choices were displayed even for cameras that do not support it.
7. [File] Fixed a bug that event marks were not displayed when opening MCFF and displaying trigger frames.
8. [File] Modified to disable the batch conversion button during individual conversion.
9. [File] Fixed a bug in the batch conversion window that the file name reverted to the name before the change, when the saving format was changed after the file name was changed.
10. [File] Fixed a bug that preview display and converted images were not output correctly when MCFF crop resize and rotate were applied simultaneously.
11. [Graph] Fixed a bug that sometimes caused an error when converting with the "Add the waveform graph to the image." option set.
12. [Quick Tool] Fixed a bug in which threshold settings for the edge extraction function were not being applied.